

WOF

REPAIRS

SERVICES

MAINTENANCE

ALL MAKES AND MODELS

# it's Spring TIME

# hello

Hello and welcome to our latest members:

#### Taupo Automotive Repairs and Servicing

If you are in the Taupo region give Karen and Darren Close from Taupo Automotive Repairs and Servicing a call or pop in and see them at 16 Runanga St, Taupo. P 07 377 0654 [www.taupoautomotive.co.nz](http://www.taupoautomotive.co.nz)

#### Riversdale Service Station

If you're in the heart of northern Southland, gateway to Fiordland and Central Otago, pop in and see Richard and Jo Clarkson at Riversdale Service Station, 92 New Castle Street, Riversdale. P 03 202 5782.

Find us on 

**Have you checked out the Automotive Solutions Group public Facebook page?**

Like us on facebook: [facebook.com/automotivesolutionsnz](https://facebook.com/automotivesolutionsnz) to learn lots of tips and tricks for car care and meet our friendly Automotive Solutions members.

**Watch out for a new Facebook competition coming your way. We have a \$100 Farmers voucher up for grabs to one lucky follower.**



## Springtime Auto Tips

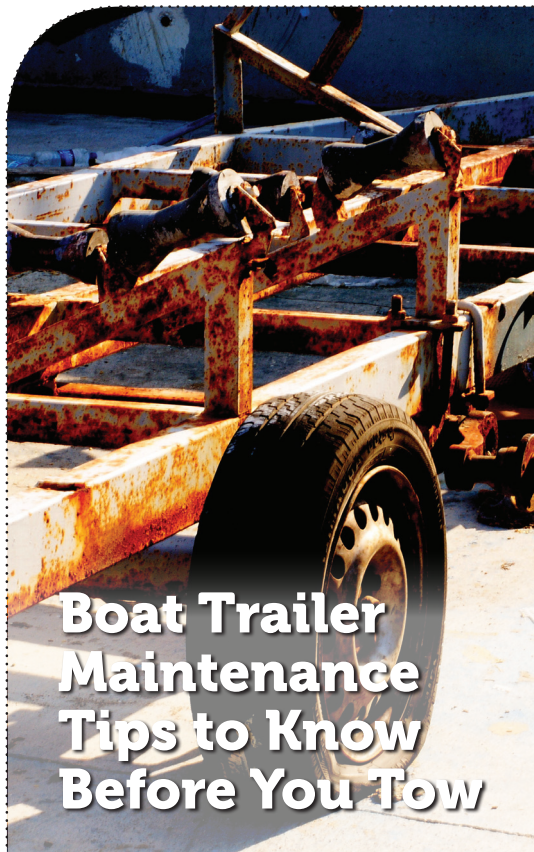
Spring is one of the prime times for auto maintenance. That first wash-n-wax on a warm Saturday afternoon is liberating. Winter's gloom (to say nothing of grit and road grime) is literally washed away. Put away the rain coats and gumboots, surely summer can't be far away.

Some preparation now will help ensure that your summer driving plans go as smoothly as you envision them.

Automotive Solutions offers the following tips on getting your vehicle ready for summer.

- Read the owner's manual and follow the recommended service schedules.
- Have hard starts, rough idling, stalling, etc. corrected before hot weather sets in.
- Flush and refill the cooling system (radiator) according to the service manual recommendations. The level, condition, and concentration of the coolant should be checked periodically.
- The tightness and condition of belts, clamps, and hoses should be checked by a qualified auto technician.
- Have a marginally operating air conditioner system serviced by a qualified technician to reduce the likelihood of more costly repairs.
- Change the oil and oil filter as specified in owner's manual. (Properly dispose of used oil.)
- Replace other filters (air, fuel, PCV, etc.) as recommended.
- Check the condition of tyres, including the spare. Always check tyre pressure when the tyres are cold.
- Inspect all lights and bulbs; replace burned out bulbs.
- Replace worn wiper blades and keep plenty of washer solvent on hand to combat summer's dust and insects.
- If you are not a do-it-yourselfer, look for an Automotive Solutions member to do it for you.





## Boat Trailer Maintenance Tips to Know Before You Tow

### TOW CONNECTIONS CAN FAIL

- Is the coupling in good condition and fitting snugly over the tow ball?
- Are the safety chains in good condition and securely fastened?
- What shape are the leaf springs in? Cracked, corroded or heavily rusted leaf springs can cause major issues. Inspect these closely.

### KEEP YOUR TYRES INFLATED

Trailer tyres are the unsung heroes of towing. A perished tyre, worn-out bearings and improper PSI all mean trouble.

### INSPECT WHEEL BEARINGS

Without grease, the bearings will generate excessive heat. This can ruin the bearings, the wheels and even the axles.

You'll know your bearings need to be replaced when:

- Grease is formed around the outside of the wheel hub. This means grease that was lubricating the bearings seeped out and the bearings need to

be re-greased.

- You hear squeaks or grinding noises.
- The wheels don't spin freely (or there's some resistance when turning them).

### CHECK THE LIGHTS

- If you have any burnt-out bulbs, replace as needed.
- The wires or connectors are cracked or damaged.
- There are cracked or loose lenses.

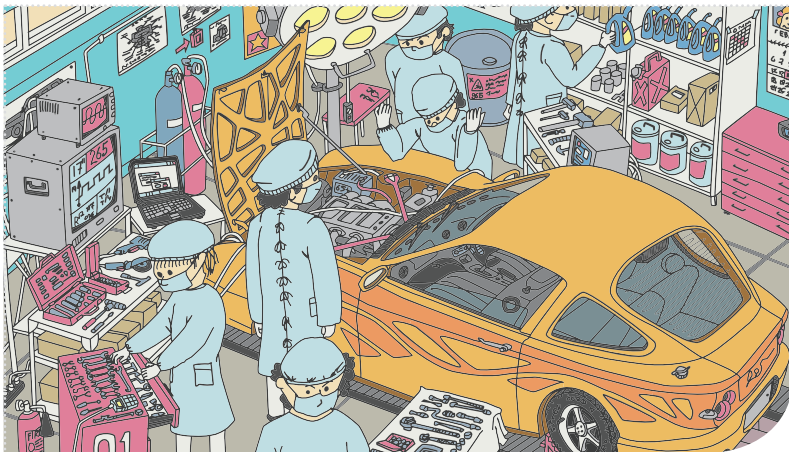
### SALT IS A KILLER, CHECK YOUR CHASSIS

Cracked, corroded or heavily rusted chassis rails and cross members can cause major issues. Inspect these closely.

### INSPECT WINCH ROPES

- Will the winch rope pull the boat onto the trailer.
- If in doubt replace your rope.

Safety begins well before you hit the road. This is especially important to remember after a long winter when you need to re-freshen your trailering skills.



## CARTHIRITIS

### Does your car need surgery?

Much like humans, a vehicles joints suffer from wear and tear over time. The human chassis suffers from osteoarthritis, which is the wearing of cartilage resulting in bone on bone. Vehicle suspension bushes and joints wear too, resulting in steel on steel. We call this carthiritis and it can have a major influence on a vehicles performance, reliability and most importantly safety.

#### Symptoms to look for

- Knocking noises during braking, cornering or on uneven road surfaces.
- Irregular steering wheel behavior.
- Unpredictable stability.
- Uneven tyre wear.

If your car is suffering from any of these symptoms please call in and one of our 'surgeons' will inspect it.



## SPRING TIME ALLERGY TIPS

With spring rains, there's more mold growth inside and outside your home. Flowers, trees, weeds, and grasses also begin to blossom. And spring cleaning will stir up dust mites throughout the house as well.

- To tame pollen, wash bedding every week in hot water.
- Wash your hair and shower before going to bed, since pollen can accumulate in hair.
- Clean every surface and vacuum twice a week.
- Wash rugs - limit throw rugs to reduce dust.
- Keep windows closed to reduce pollen entering the house.
- Change filters in air conditioning units and vents frequently this time of year.
- Consider allergy medicine - talk to your doctor about a seasonal allergy drug that may be appropriate for your symptoms.



Chris and Vicki Koubaridis  
80 Weraroa Road, Waverley 4510  
P: 06 346 5099 M: 027 447 3505  
E: waverley.motors@xtra.co.nz

